

Community Health Needs Assessment and Action Plan



**Port Huron
Hospital**

Date Completed: February 2012

Background

The Patient Protection and Affordable Care Act requires that non-profit hospitals conduct a Community Health Needs Assessment and adopt an Action Plan once every three years.

Our Approach

- Reviewed local demographics and vital health statistics.
- Reviewed the findings of a countywide Behavioral Risk Factor Surveillance Survey (BRFSS).
- Conducted a focus group of local non-profit organizations and community leaders.
- Conducted several key informant interviews.

Demographics

Demographics: St. Clair County, MI

Population size ¹	168,894
Population density (people per square mile) ²	233
Individuals living below poverty level ³	11.1%

Age distribution¹

Under Age 19	24.5%
Age 19-64	62.0%
Age 65-84	11.6%
Age 85+	1.9%

Race/Ethnicity¹

White	95.1%
Black	2.5%
American Indian	0.5%
Asian/Pacific Islander	0.5%
Hispanic origin (non add)	2.5%

Vital Statistics

Profile of St. Clair County, 2009

POPULATION

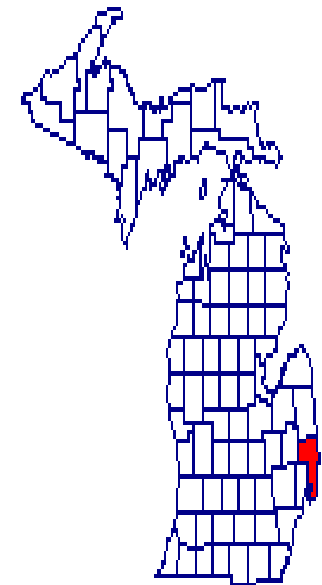
As of July 1, 2009 167,562
 Rank Among Counties: 13
 Per Square Mile: 231.3

NATALITY

Live Births: 1,779
 Teenage Mothers: 170
 Low Weight Births: 153
 First Births: 713

MORTALITY

Total Deaths: 1,575
 Infant Deaths: 14
 Neonatal Deaths: 5
 Postneonatal Deaths: 9
 Perinatal Deaths: 13
 Fetal Deaths: 11



MARRIAGE

Marriages: 868
 Marriage Rate: 10.4

DIVORCE

Divorces: 621
 Divorce Rate: 7.4

Vital Statistics

NATALITY BY RACE OF MOTHER

	Total		White		Black		Other	
	Number	Rate	Number	Rate	Number	Rate	Number	Rate
Live Births	1,779	10.6	1,677	10.4	48	9.8	49	22.9
	Total		White		Black		Other	
	Number	Ratio	Number	Ratio	Number	Ratio	Number	Ratio
Teenage Mothers	170	95.6	159	94.8	7	145.8	4	*
Low Weight	153	86.0	134	79.9	10	208.3	8	163.3
Under 1,500 Grams	29	16.3	25	14.9	2	*	2	*
< 37 weeks Gestation	227	127.6	208	124.0	12	250.0	7	142.9
Prenatal Care Began in First Trimester	1,366	767.8	1,303	777.0	22	458.3	39	795.9

Note: Rate is per 1,000 estimated 2009 population and ratio per 1,000 live births in 2009 in specified group.

Vital Statistics

INFANT AND PERINATAL MORTALITY BY RACE

	Total		White		Black		Other	
	Number	Ratio	Number	Ratio	Number	Ratio	Number	Ratio
Infant Deaths	14	7.9	13	7.8	1	*	-	-
Neonatal Deaths	5	*	4	*	1	*	-	-
Postneonatal Deaths	9	5.1	9	5.4	-	-	-	-
Perinatal Deaths [†]	13	7.3	9	5.3	2	*	-	-
Fetal Deaths	11	6.1	7	4.2	2	*	-	-

Note: Rate is per 1,000 live births or total births in 2009 in specified group.

[†]Provisional.

Vital Statistics

MORTALITY

	Total			White			Black			Other		
	Total	Male	Female	Total	Male	Female	Total	Male	Female	Total	Male	Female
Deaths	1,575	808	767	1,518	777	741	26	14	12	9	6	3
Crude Death Rate	9.4	9.7	9.1	9.5	9.8	9.1	5.3	5.5	5.1	4.2	6.1	*

	Age in Years												
	<1	1-4	5-8	10-14	15-19	20-24	25-29	30-39	40-49	50-59	60-69	70+	Unk
Total Deaths	14	2	2	3	11	10	7	39	85	166	251	985	-
White Male	8	2	1	1	9	7	4	25	61	92	138	429	-
White Female	5	-	1	2	1	3	3	13	19	63	101	530	-
Black Male	-	-	-	-	-	-	-	-	1	5	3	5	-
Black Female	1	-	-	-	1	-	-	-	1	2	-	7	-
Other Male	-	-	-	-	-	-	-	1	1	1	1	2	-
Other Female	-	-	-	-	-	-	-	-	1	1	1	-	-

Note: Rate is per 100,000, 2009 population in specified group.

Vital Statistics

LEADING CAUSES OF DEATH

	Deaths	Rate
Total	1,575	840.7
Heart Disease	433	229.7
Cancer	415	212.7
Chronic Lower Respiratory Diseases	122	65.0
Stroke	64	33.9
Unintentional Injuries	94	56.8
Diabetes Mellitus	57	30.5
Alzheimer's Disease	39	21.0
Kidney Disease	22	11.8
Pneumonia/Influenza	17	*
Intentional Self-harm (Suicide)	25	14.9

Children Ages 1-19

	Deaths	Rate
Total	18	42.9
Accidents	10	23.8
Assault (Homicide)	1	*
Suicide	3	*
Cancer	-	-
Congenital malformations	-	-

LEADING HOSPITAL DISCHARGES--2009

	Discharges	Rate
All Hospitalizations	22,348	1,333.7
Heart Diseases	2,596	154.9
Newborns and Neonates (Less than 7 days)	1,819	108.6
Females with Deliveries	1,750	104.4
Injury and Poisoning	1,797	107.2
Infectious and Parasitic Diseases	928	55.4
Psychoses	847	50.6
Cancer (Malignant Neoplasms)	758	45.2
Osteoarthritis and Allied Disorders	807	48.2
Pneumonia	590	35.2
Cerebrovascular Diseases	754	45.0

Children Ages 1-19

	Discharges	Rate
All Hospitalizations	1,053	251.0
Females with Deliveries	172	41.0
Injury and Poisoning	134	31.9
Pneumonia	71	16.9
Asthma	54	12.9
Appendicitis	54	12.9

Note: Rates are per 100,000. Leading causes of death are computed by the direct method, using as the standard population the age distribution of the total population of the United States for the year 2000. Children and discharge data are per 100,000, 2009 population in specified group.

Vital Statistics

Selected Chronic Disease Indicators, St. Clair County Residents 2007-2009

Cause of Death and ICD-10 Codes	CANCER MORTALITY, 2007-2009			Primary Site and ICD-O-3 Codes	CANCER INCIDENCE, 2005-2007	
	Average Number	Crude Death Rate	Age- adjusted Rate		Average Number	Age- adjusted Rate
All Cancer (C00-C97)	390	231.2	206.2	All Cancer (C00-C97)	913	500.8
Bladder (C67)	13	7.9	7.3	Bladder (C67)	47	26.6
Breast (C50)	30	35.2	28.2	Breast (C50)	122	124.2
Cervix (C53)	2	*	*	Cervix (C53)	8	9.0
Colon & Rectum (C18-C20, C26.0)	37	22.1	19.9	Colon & Rectum (C18-C20, C26.0)	88	47.4
Lung and Bronchus (C34)	125	73.8	64.9	Lung & Bronchus (C34)	143	79.2
Melanoma (C43)	5	3.0	*	Melanoma (C43)	32	17.7
Oral Cavity & Pharynx (C00-C14)	7	3.9	3.5	Oral Cavity & Pharynx (C00-C14)	18	9.8
Prostate (C61)	16	19.6	23.1	Prostate (C61)	134	160.9

Vital Statistics

CARDIOVASCULAR DISEASE MORTALITY, 2007-2009

Cause of Death and ICD-10 Codes	Mortality		
	Average Number	Crude Death Rate	Age- adjusted Rate
Major Cardiovascular Diseases (I00-I78)	558	330.3	298.1
Heart Disease (I100-I09, I11, I13, I20-I51)	464	274.8	247.6
Congestive Heart Failure (I50.0)	34	20.1	18.4
Coronary Heart Disease (I11, I20-I25)	365	216.0	194.0
Stroke (I60-I69)	69	40.9	37.2

CARDIOVASCULAR DISEASE HOSPITAL DISCHARGES, 2007-2009

Diagnosis and ICD-9 Codes	Discharges			Average Length of Stay
	Average	Crude Rate	Age- adjusted Rate	
Acute Myocardial Infarction (410)	413	242.4	219.6	4.7
Congestive Heart Failure (428.0)				
All Ages	404	237.1	221.9	4.9
Ages 65 & Over	333	1,501.2	--	4.8
Stroke (430-434 & 436-438)				
All Ages	491	288.6	267.9	4.9
Ages 65 & Over	347	1,585.8	--	4.9

Vital Statistics

OTHER SELECTED CAUSES, MORTALITY, 2007-2009

Cause of Death and ICD-10 Codes	Mortality		
	Average Number	Crude Death Rate	Age- adjusted Rate
Asthma (J45-J46)	3	2.0	*
Chronic Liver Disease (K70 or K73-K74)	21	12.4	10.9
Chronic Lower Respiratory Diseases- Ages 45 & Over (J40-J47)	105	140.0	---
Diabetes (E10-E14)	65	38.7	35.3
Any Mention ¹	165	97.7	89.5
Nephritis, Hydronephrosis & Renal Failure ²	24	14.2	12.9
Any Mention ³	135	79.8	12.9

OTHER SELECTED HOSPITAL DISCHARGES, 2007-2009

Diagnosis and ICD-9 Codes	Discharges			Average Length of Stay
	Average	Crude Rate	Age- adjusted Rate	
Arthritis --Ages 45 & over ⁴	931	1,357.8	---	3.6
Asthma (493)	283	166.4	160.0	3.9
Diabetes (250)				
All	266	156.0	148.7	4.5
with Lower Extremity Amputation ⁵	19	11.0	10.0	10.5
Hip Fractures-Ages 65 & over (820)	148	667.2	---	6.3
Osteoporosis Any Mention- Ages 65 & over ⁵	683	3,079.1	---	---

**Age-Adjusted Death Rates for Ten Leading Causes by Race and Sex
St. Clair County Residents, 2009**

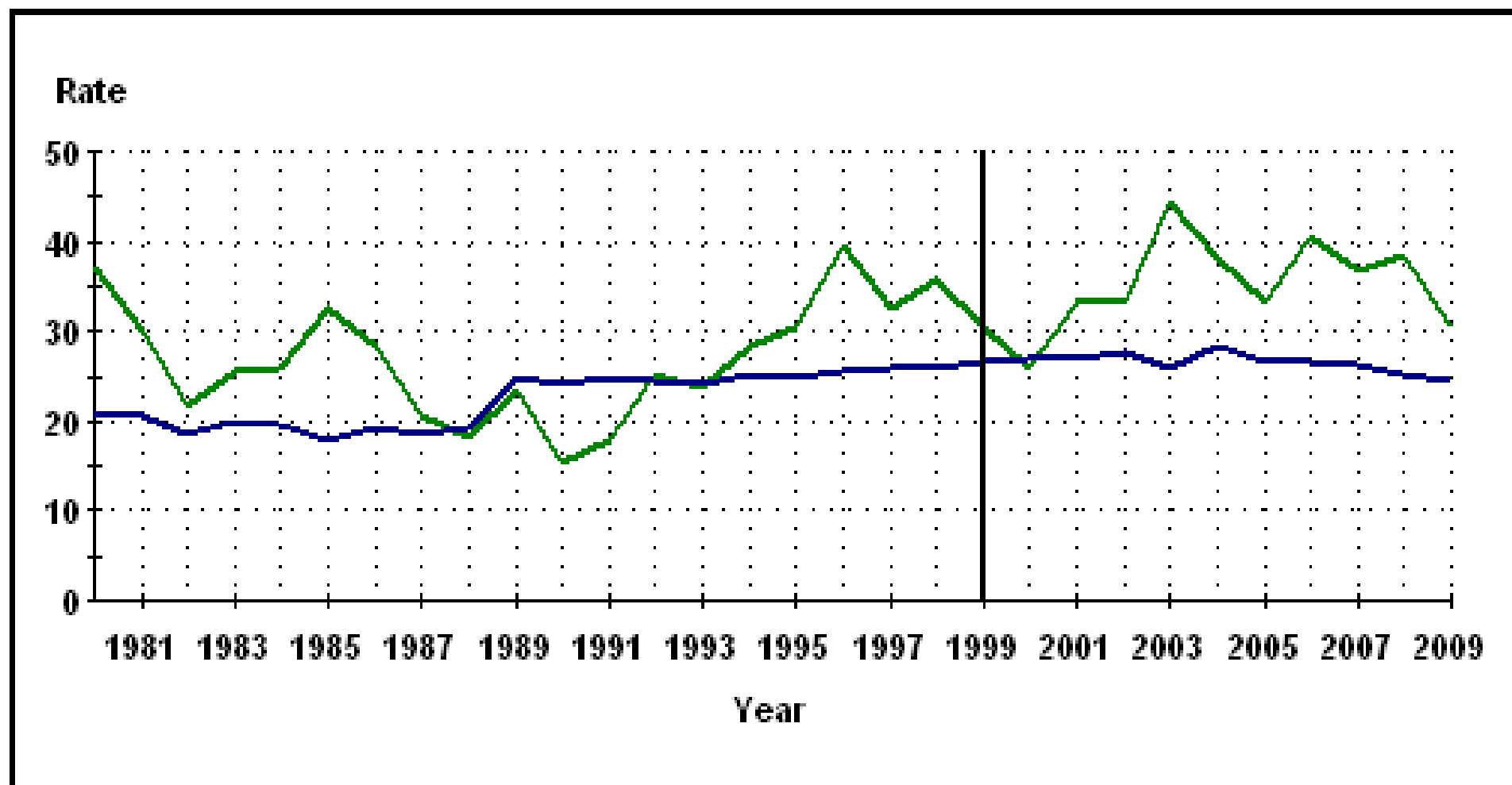
Cause of Death	All Races			White			Black		
	Total	Male	Female	Total	Male	Female	Total	Male	Female
Heart Disease	229.7	296.7	175.7	230.0	294.8	178.1	*	*	*
Cancer	212.7	241.8	191.5	212.0	238.5	193.1	*	*	*
Chronic Lower Respiratory Diseases	65.0	79.4	56.0	66.7	81.3	57.5	*	*	*
Stroke	33.9	30.8	35.9	33.7	30.4	35.8	*	*	*
Unintentional Injuries	56.8	85.2	30.3	58.5	88.7	30.1	*	*	*
Diabetes Mellitus	30.5	33.0	27.0	30.8	33.0	27.7	*	*	*
Alzheimer's Disease	21.0	*	24.7	21.5	*	25.3	*	*	*
Kidney Disease	11.8	*	*	11.5	*	*	*	*	*
Pneumonia/Influenza	*	*	*	*	*	*	*	*	*
Intentional Self-harm (Suicide)	14.9	*	*	15.1	*	*	*	*	*
All Other Causes	155.7	182.0	133.9	155.2	183.5	132.1	*	*	*
Total	840.7	1,019.6	694.7	843.7	1,020.9	699.0	776.4	*	*

**Rates of Years of Potential Life Lost Below Age 75,
By Sex, Due to Selected Causes of Death
St. Clair County and Michigan Residents, 2009**

Michigan Rank	Cause of Death	St. Clair			Michigan		
		Total	Male	Female	Total	Male	Female
1	Malignant neoplasms	2,189.4	2,213.4	2,165.2	1,652.5	1,714.7	1,590.5
2	Diseases of heart	1,072.4	1,699.7	440.7	1,227.5	1,689.5	767.1
3	Accidents	1,786.5	2,758.8	806.0	948.5	1,318.1	580.1
4	Certain conditions originating in the perinatal period	*	*	*	377.4	433.8	321.2
5	Intentional self-harm (suicide)	541.0	*	*	347.3	542.8	152.5
6	Assault (homicide)	*	*	*	291.6	481.0	102.8
7	Chronic lower respiratory diseases	334.1	279.0	389.6	222.7	232.3	213.2
8	Congenital malformations, deformations and chromosomal abnormalities	*	*	*	198.1	213.2	183.2
9	Diabetes mellitus	295.9	412.2	178.8	187.3	214.7	160.0
10	Chronic liver disease and cirrhosis	*	*	*	185.3	247.9	123.0
11	Cerebrovascular diseases	105.0	126.8	83.0	169.0	186.2	151.7
12	Influenza and pneumonia	*	*	*	82.0	85.8	78.3
13	Nephritis, nephrotic syndrome and nephrosis	31.8	*	*	78.1	89.4	66.8
14	Septicemia	*	*	*	74.3	82.3	66.4
15	Other diseases of respiratory system	*	*	*	62.8	68.2	57.4

Source: Michigan Department of Community Health

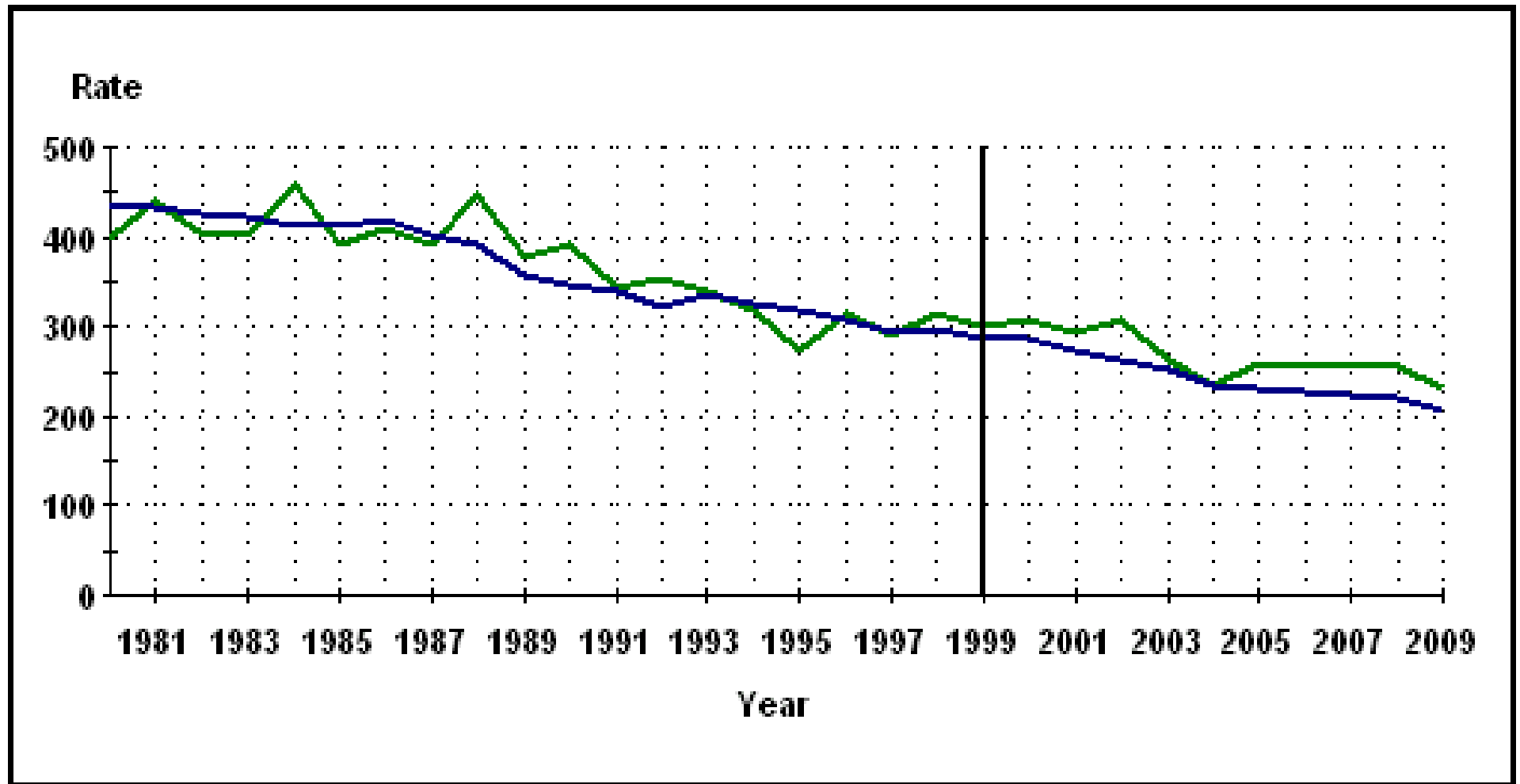
Diabetes Mellitus Age-adjusted Death Rates, St. Clair County Residents, 1989-2009



Source: 1989 - 2009 Michigan Resident Death Files,
Division for Vital Records & Health Statistics,
Michigan Department of Community Health

— St. Clair
— Michigan
— ICD-9/10 Rev Change

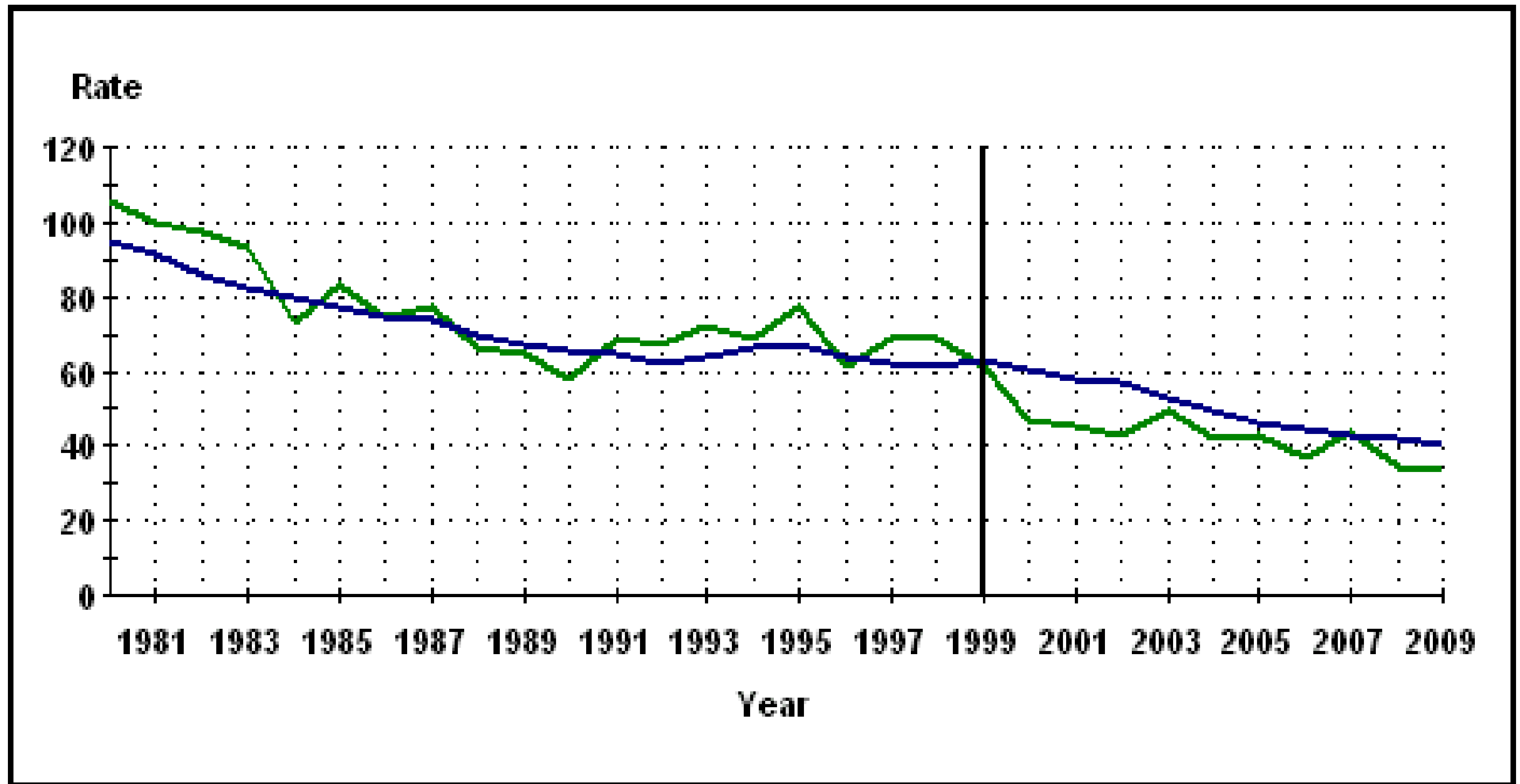
Heart Disease Age-adjusted Death Rates, St. Clair County Residents, 1989-2009



Source: 1989 - 2009 Michigan Resident Death Files,
Division for Vital Records & Health Statistics,
Michigan Department of Community Health

— St. Clair
— Michigan
— ICD-9/10 Rev Change

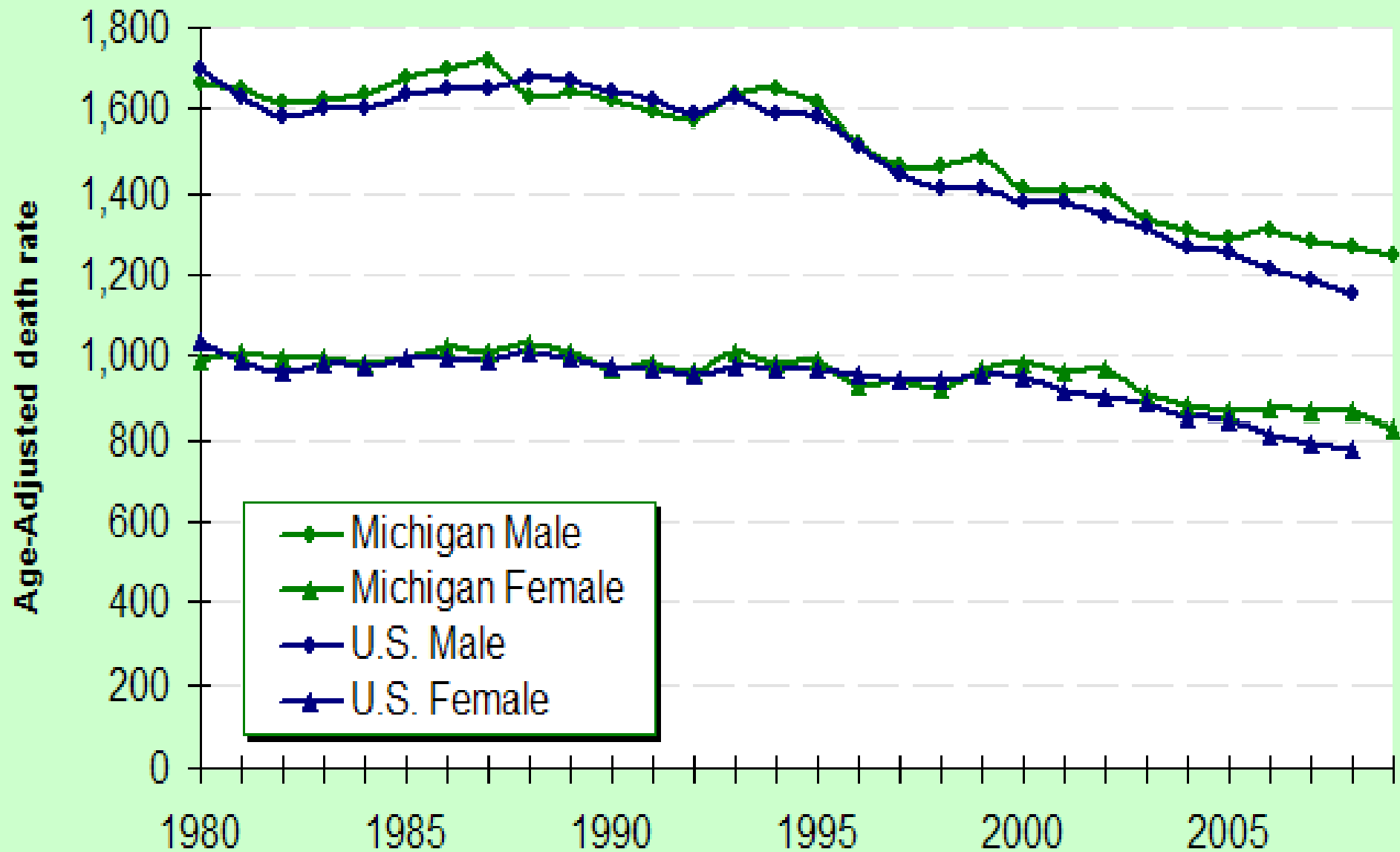
Stroke Age-adjusted Death Rates, St. Clair County Residents, 1989-2009



Source: 1989 - 2009 Michigan Resident Death Files,
Division for Vital Records & Health Statistics,
Michigan Department of Community Health

— St. Clair
— Michigan
— ICD-9/10 Rev Change

Black Age-Adjusted Death Rates by Sex Michigan and United States Residents, 1980-2009



Source: Michigan Department of Community

Behavioral Risk Factor Surveillance (BRFSS)

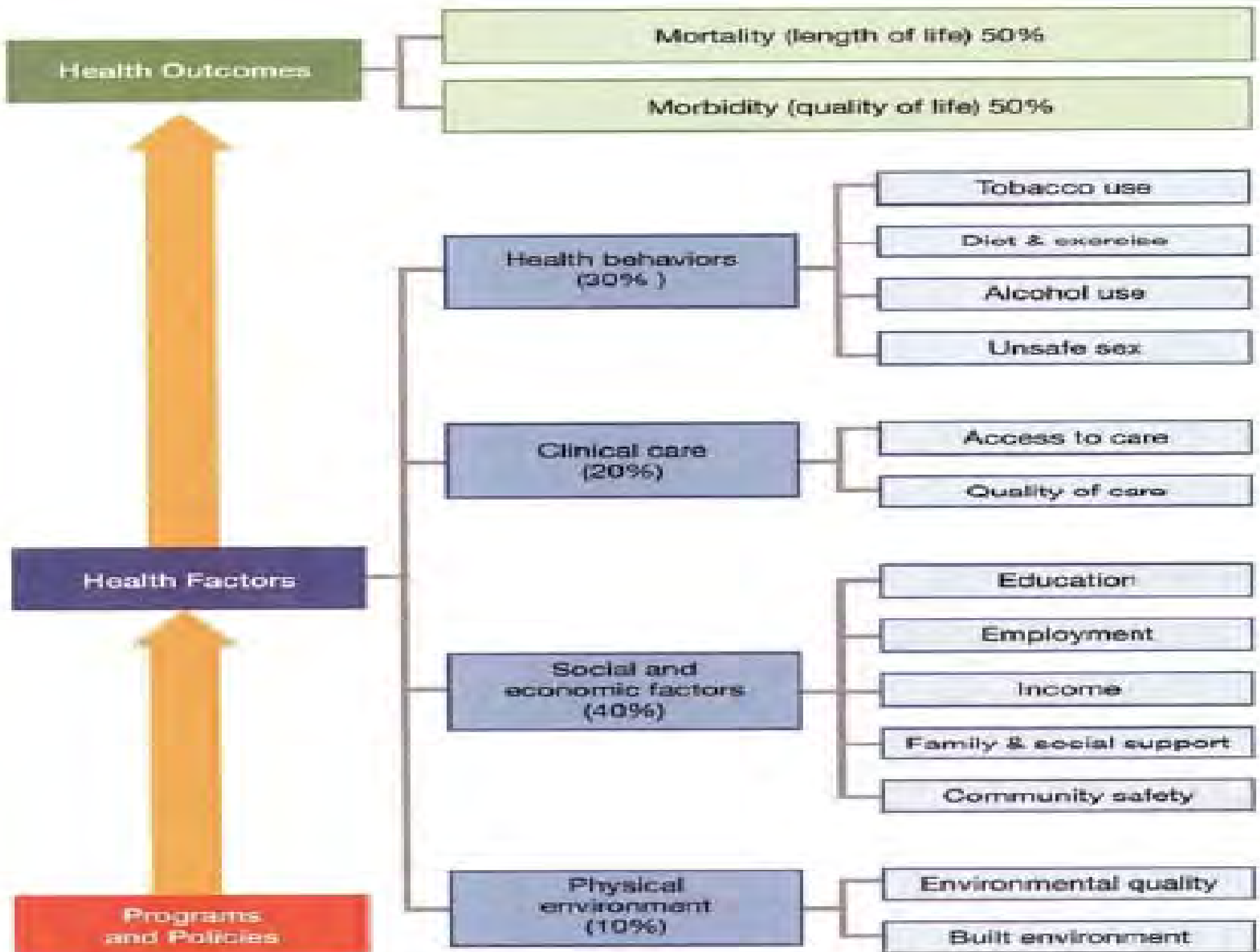
- 709 completed interviews (Approx 3.5% of MoE)
- Assessment of the health status and health behavior of St. Clair County adult residents
- Part of a community partnership committed to improving health, along with St. Clair County, St. Clair County Health Department, St. Joseph Mercy Hospital, and St. John's River District Hospital
- Published in December 2010 (conducted 2009-2010)
- Enabled outreach to broad interests of community
- Key tool for CHNA
- St. Clair County Community Health Profile can be read in full at:
http://www.stclaircounty.org/offices/health/forms/SCC-CHAP2010_v2.pdf

St. Clair County Findings

- Physical activity/sedentary lifestyle
- Obesity and overweight
- Inadequate consumption of fruits and vegetables
- No physical activity in the past month
- Heavy/Binge Drinking
- Tobacco use/Second-hand smoke exposure
- High Blood Pressure (hypertension)
- High Blood Cholesterol
- Angina or Coronary Artery Disease
- Arthritis
- Flu Shot Deficiency
- HIV Tests Deficiency
- Health Status
- Health Insurance Coverage
- Angina or Coronary Heart Disease

St. Clair County Recommended Priorities

- Obesity and overweight
- Physical activity and sedentary lifestyle
- Consumption of fruits and vegetables
- High blood pressure
- High blood cholesterol
- Tobacco use
- Heavy/binge drinking



Key Community Health Assets

- Port Huron Hospital
- St. Joseph Mercy Hospital – Port Huron
- St. John River District Hospital
- St. Clair County Health Department
- St. Clair County Community Mental Health
- Blue Water “Y”
- Port Huron Area School District

Hospital Role in Improving Community Health

- Comparative Advantage
 - Downstream
 - But opportunities throughout continuum
- Ongoing Outreach
 - Prevention e.g. smoking cessation
 - Screenings e.g. BP & Cholesterol
 - Chronic Disease Management e.g. Diabetes
 - Access to Care e.g. Free or Discounted Care
- Venues
 - Good Health Events
 - “Today’s Health”
 - Foundation Outreach
 - Industrial Health, “Take-Care-a-Van”
 - 55 Plus
 - Outpatient Services

PHH Action Plan

More Upstream

- Prevention - Tobacco Use: Offer smoking cessation assistance through employee and community programs
- Prevention - Obesity and Overweight: Participate in the “Y’s” Activate America program to target obesity reduction in local schools
- Screening - High Blood Pressure/High Cholesterol/other: Offer Working on Wellness, “Good Health Events” and Foundation Outreach to employers and the community
- Chronic Disease Management – Obesity and overweight: Offer diabetes education aimed at reducing morbidity, and “living well” with diabetes
- Access to care: Offer free or discounted mammograms

More Downstream